



# PANTHEON™ Farming



A farm is never  
out of work  
and any help  
is welcome.

## MEASURED. MANAGED. PROFITABLE.

- Are you sometimes wondering whether your main activity is farming or paperwork?
- Do you know how to enter received and issued invoices for the VAT account?
- Do you want to know how much your work is worth?  
Which crop is the most profitable?

**PANTHEON Farming** is a complete farm management solution where all collected data is used for a multitude of purposes. You can check the cost price of your products, see how productive and healthy animals are, how much wine is in the cellar and how much fertilizer in stock, and last but not least, **know the financial standing of your farm.**

---

## IN THE FIELD AND STABLES

---



*»Once you use PANTHEON Farming, you can't go without. It's the right investment for anyone that wants to save time and money. It gives me a better overview over my farm work. During the winter, I will review work from the past year and based on that plan what and where to plant in the next year.«*

Ervin Andrejčič, farm »Kmetija pri Špilarjevih«, Grahovo



In the stables



In the field



In the orchard,  
vineyard

---

### PANTHEON Farming Mobile App

PANTHEON Farming Mobile will save you data entry time; you can enter information in the field as it happens, not only later at the computer. Mistakes at data entry are thus less likely, you don't need to worry about forgetting information or entering it twice. You can check when a crop was last sprayed or when an animal is expected to give birth.

The entered data allows you to keep full records on fertilization, spraying and organic farming; a product's cost price and cost of cultivation are calculated on the fly; you can always see the status of your animals and the value of your work.





»I see the main benefit in being able to anytime track events based on which I decide how to work in the future. All entered materials are automatically included in the balance sheet and VAT account. »

Martin Sraka, farm "Sraka", Turnišče



## Crop farming

A significant cost for the farm are fertilizers and pesticides, which are problematic for the environment when used in improper quantities. Exact fertilization and spraying plans reduce your costs, optimize use of materials and reduce the effects on the environment. Diligent recording of used materials and invested labor will satisfy inspection requirements and automatically calculate cost prices of products after completing a production cycle.

## Animal husbandry

Check the productivity of your animals by tracking milking, growth and births. Also covered in the program is reproduction/insemination, pregnancies and births; upon birth, a new animal record is created automatically, which you just need to fill out. With the mobile app, you can directly on location enter when an animal is moved to a different stable, taken to a fair, sold or slaughtered. Selling an animal will automatically create an invoice for the customer.

**Cattle Record** UK 45477899

**Cattle** Status: **IN LACTATION** Invoice No.:

Animal ID: UK 45477899 Name: Hana Date of Birth: 21.7.10  
Location: 1035587 Sex: Female Age Y/M/D: 5/3/9  
Purpose: Milk Breed: HOLST. - FRIESIAI Date Disposed:  
FADN Type: Dairy cows

General Weighing Milk Production Health Reproduction Movement Linear Score Repeated Making

**Parents** Family Tree  
Dam ID: UK 45477899  
Dam Name: Bronco  
Sire ID: 123668  
Sire Name: UK 45477458  
Sire Sem. ID: Pear  
Damsire Name:  
Damsire ID:

**Acquisition**  
Acquis. Type: Birth  
Acquis. Date: 21.7.10  
Registration:  
Document No.: 122F35984  
Doc. Date: 21.7.10  
Estim. Value: 160,00

**Disposal**  
Status: NOT DISPOSED  
Disposal Type:  
Date Disposed:  
Dispose animal  
Document No.:

**Milk Production - Key Indicators**  
Animal Status: **IN LACTATION**  
Lifetime Production  
Lactations: 13  
Avg. Lact. Days: 238  
Milk Total (kg): 2258  
Fat (%): 4,36  
Protein (%): 3,25

**Health - Key Indicators**  
Animal Status: **HEALTHY**  
Last Disease:  
Meat Withdrawal:  
Milk Withdrawal:

**Reproduction - Key Indicators**  
Animal Status: **AFTER INSEMINATION**  
Anticip. Birth:  
Insemination Index: 3,33  
Days to First Insem.: 79  
Days btw Insem.: 30  
Avg. Days Pregnant: 225  
Live Births: 2  
Stillbirths: 3





»PANTHEON can be used by everyone in the family, but by sister Meri helps me the most. Finally, we have a good overview of our animals' health. The smartphone reminds us of important events regarding animals.«

Klemen Gašperlin, farm "Pr' Brlin", Luže pri Šenčurju



## Fruit growing

Track fruit growing cycles, records tasks and reduce production cost.

All the data in one place gives you total control over production and the related cost.

## Winegrowing and winemaking

Traceability of wine is essential for determining the geographical origin of grapes and wine. PANTHEON Farming allows you to track the whole process from growing grapes to bottling wine, financially as well as materially.

Product	Cycle, ID	Description	Planned Qty	Unit	Date Entered	Planned Start	Planned End	End Date	Status	Type of Cu
CHARDONNAY	CHARDONNAY 10	types of grapes CHARDONNAY, year 10	2500	kg	1.3.10	1.3.10	31.10.10		In progress	
CHARDONNAY	CHARDONNAY 11	types of grapes CHARDONNAY, year 11	2600	kg	1.3.10	1.3.10	31.10.10		Closed	
CHARDONNAY	CHARDONNAY 12	types of grapes CHARDONNAY, year 12	2800	kg	1.3.10	1.3.10	31.10.10		In progress	
CHARDONNAY	CHARDONNAY 10	types of grapes CHARDONNAY, year 10	2500	kg	1.3.10	1.3.10	31.10.10		In progress	

Winegrowing cycles

## GIS (Geographic Information System)

In the GIS environment, you can examine the history and real time forecast, physical chemical tillage, water cycle, nutrient cycle, pest cycle, remote sensing data, stress indicators, etc. and calculate the costs and planned quantity

of crops. You can make countless useful spatial statistical analyses as e.g. spreading of diseases. Such expert models enable you to plan activities (spraying, fertilizing) in the field.



# FARM PAPERWORK



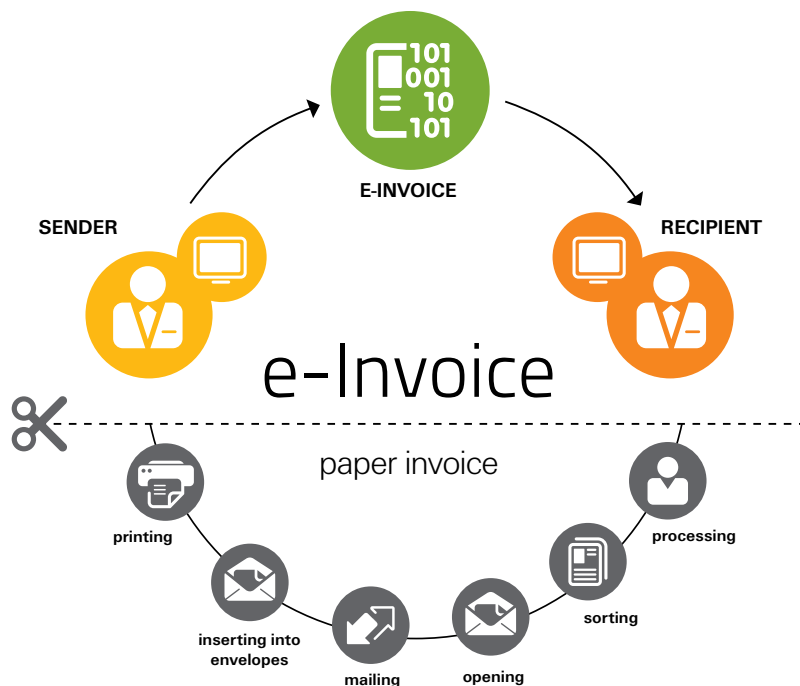
»The Cattle module is very useful. All animals are listed there and with a few clicks I have information about a cow's calvings, milk production, age, health. I enter all important events into the calendar: heat, births, diseases. I also print out all reports for individual animals, so I always have them handy in a folder.«

Matej Gantar, farm »Kmetija pri Zalarju«, Godovič

Record keeping cannot be avoided, but you can avoid entering the same information several times, thus saving time. Reports are created automatically from all the collected information and supplemented with data from online public databases.

## Issued and received invoices

Invoices and packing slips can be printed or sent by e-mail in one click. Entering received invoices regularly gives you an insight into your costs and allows you to compare finances between years. You will be able to tell how much time and material goes into a liter of milk or a kilogram of cheese, how much raising an animal has cost, or how much went into a ton of potatoes, grapes or peaches.



## Fertilization plan/crop rotation

The program calculates based on soil analyses, nutrient requirements and fertilizer contents how much of a given fertilizer you have to add for optimal results. With proper crop rotation and fertilization, you will avoid wasting nutrients, over-fertilizing soil and save on used materials.

## Stock overview

Knowing what's in stock is important when planning a new production cycle. You can track stock for individual items for each warehouse separately. This way, you can make informed decisions what materials to buy and avoid overstocking.

**Fertilization plan**

Subdivisions	Plan, Periods	Soil Analysis	Calculation
Personal Subdivisions	No. From Year To Year	Analyse Date: 20.8.22	+N +P205 +K2O -N -P205
126496 46298738 1	1 14 16	Soil Texture	Total 492,35 537,22 8204,22 290,21 294,32
91084 050456 2,35		Nutrient Requirements	
1665461 556223 0,25		P205 (mg/kg)	P205 19
5848736 364256 2,7		K2O (mg/100g)	K2O 225
		Phosph (g)	N 1%
		pH in HCl	
		pH in Ca	

Productive Cycle	Year	Product (Item)	Planned Qty	U/M	N (kg/ha)	P205 (kg/ha)	K2O (kg/ha)
WINTER BA 14	14	WINTER BARLEY	5,5	T	123,75	49,5	18,5
SEMI CORN 15	15	SEMI CORN	36	T	123,75	52,5	140
WINTER BA 16	16	WINTER BARLEY	5,5	T	123,75	49,5	18,5

Field/Year	Area (ha)	Soil N (kg/ha)	Soil P (kg/ha)	Soil K (kg/ha)	Nutrient available	N (kg/ha)	P (kg/ha)	K (kg/ha)	Average nutrient requirement (kg/ha)
14-16	5,5	1,8	0,6	0,2	0	0	0	0	0

Fertilizer	Product	Area (ha)	Productive Cycle	Product (Item)	Quantity	U/M	N (kg/ha)	P (kg/ha)	K (kg/ha)	Total N (kg/ha)	Total P (kg/ha)	Total K (kg/ha)
14-16	5,5	14	WINTER BARLEY	5,5	T	123,75	49,5	18,5	0	123,75	49,5	18,5
15	36	SEMI CORN	36	T	123,75	52,5	140	0	123,75	52,5	140	
16	5,5	WINTER BARLEY	5,5	T	123,75	49,5	18,5	0	123,75	49,5	18,5	

Fertilization plan

Fertilization plan printout

## Cost price

The program automatically calculates the cost price of a product based on information from the production cycle and daily tasks, which include the value of your labor.

## Cost overview

Collected data of past periods are the basis for smart planning of your farm's future and for making decisions that turn into profit. Continuous recording of revenues and costs shows you a real image of your business and indicates measures for improvement.

## Dashboard – quick farm overview

A graphical representation of key performance indicators for animals shows you how successful your animal husbandry operations are. The ecological aspect of business shows you how much energy and fuels was used during a

period. You see payables and receivables at a glance, allowing you to take appropriate and timely steps. Track business performance through sales figures by product lines or sales people, monitor employees' performance, check inventory levels and inventory turnover.

## VAT account

The VAT account is created automatically based on issued and received invoices. You can quickly see how much tax you have to pay or be refunded. Required reports can be submitted electronically (in countries where supported). Automation of posting and VAT greatly reduce the cost of accounting.

## FADN return

Reporting for FADN is a breeze with PANTHEON Farming. Data collected and prepared for FADN is very cost effective.



Dashboard – cattle



Dashboard – quick overview



# ACCOUNTANT



»All records that farms have to keep and have usually been kept on paper, can now be kept in PANTHEON Farming, which means that you no longer need to deliver documentation to your external accountant. This reduces the risk of misplaced documentation.«

Alja Strunčnik Urbanč, Vitke rešitve d.o.o.



The program automates data flow from documents and materials in accounting, making the accountant's work significantly easier. Farm data like animal-related events, crop tasks or product sales all form a financial image of the farm. The accountant checks and posts received invoices with the help of tools for automation. This leaves the accountant much more time to give you advice with investments and saving.

## Posting

Automated posting of invoices is a great time-saver for the accountant.

## Financial statements

The accountant prepares financial statements based on posted documents. He also checks and updates existing data as necessary.

## Consulting about loans, taxes, etc.

Because your data is neatly organized in one place, the accountant can better advise you about investments, loans, taxes, applications and other long-term decisions.

Number	Doc. Type	Date	Doc. Date	Supplier	Amount Due	Value (Curr.)	Curr.	Expenses	Post	Document 1	VAT Date
12-100-00000001	Purchase	31.1.12	20.11.12	102225678	18,256.87	1,478.55	EUR	4,587.45	<input type="checkbox"/>		31.1.12
14-100-00000001	Purchase	31.1.14	20.11.14	102224478	14,256.87	1,444.55	EUR	4,447.45	<input type="checkbox"/>		31.1.14

Posting

# AGRICULTURAL CONSULTANT



»The vigor and curiosity of young farmers is expected, but admirable are cases when seasoned farmers decide to try new technologies and approaches in farming; I'm impressed.«

Damijan Vrtin, Agricultural Economics Specialist, Chamber of Agriculture and Forestry Novo mesto



**PANTHEON Farming** collects all data in one place, so the consultant saving the consultant's time and enabling him to give you better and faster advice, also about agri-environment-climate payments, inform you about soil nitrogen

balance and track the impact of subsidies on your farm. The consultant will help you with creating fertilization plans and choosing fertilizers and application methods.



## Get started with PANTHEON Farming?



### Call us

Call us at +41 55 415 5476 and together we will find the appropriate solution to optimize business processes at your farm.



### Try the demo

With instructions and video guides, you will quickly become familiar with the environment and start using the program.



### Welcome

Come for a free presentation, courses, seminars and other events.



### Get information

Extensive knowledge database in various forms.

- » Blog
- » Forum
- » Documentation
- » Support



# MOBILE POS



»My products are all handmade and I sell them in shops and on fairs. PANTHEON Mobile POS saves me time in producing receipts as well as managing inventory and finance. I can focus time and energy on my work.«

Nataša Šikovec, Irene



In the office

## Mobile POS for sales at the farm, market or in the field

**PANTHEON Mobile POS** runs on tablets and smartphones, allowing you to produce receipts anywhere, on markets, fairs or in the home yard. No internet connection is required.

The app is easy to use. It can connect via bluetooth to a scale, mobile printer or barcode scanner.



## Features of PANTHEON Mobile POS

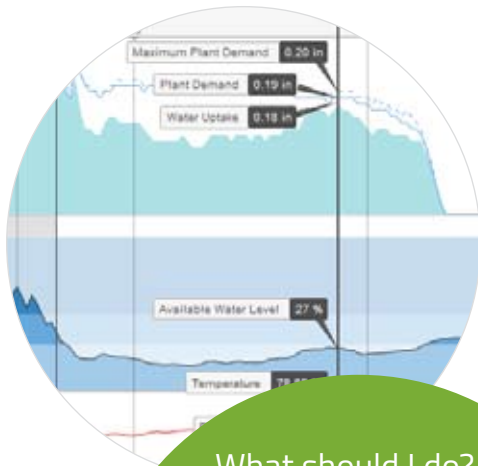
- item selection with images,
- item search by description or barcode,
- quickly produce and print receipts for end consumers and businesses,
- simple item editing,
- units of measurement,
- overview of daily cash register balancing,
- overview of issued and received invoices,
- print simple and detailed receipt,
- overview of cash receipts, cash disbursements and cash journal,
- simple sales reports and analyses,
- automatic upgrade to newer versions of the program,
- multiple users,
- safe data storage, including automated backups,
- easy data transfer to accounting,
- retrieve company information from online service (in countries where available),
- quick input of customer information directly on cash register,
- submit required reports online (in countries where available),
- print invoices (packing slips, sales orders),
- automatic data synchronization,
- print invoices in A4 format,
- analyses by items, item groups, users and cash registers,
- mobile operator billing (in countries where available).

For more information, call us at **+41 55 415 5476** or write to **fa@datalab.ch**

All photos were taken on farms of PANTHEON Farming users. If you want to ask the farmers about their experience with the program, send us a request to **fa@datalab.ch** or **+41 55 415 5476** and we will connect you with the selected farmer.

# CROP OPTIMIZER

- Care about your bottom line not just plant well-being!
- Based on mathematical modeling of plant growth
- Timely and economical decisions based on exact farmers data
- Saves water and fertilizers
- Analytics for yields and income

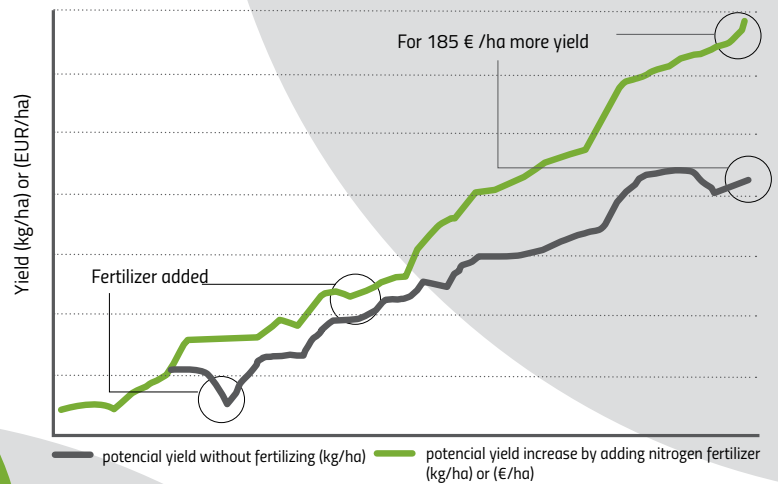


What should I do?

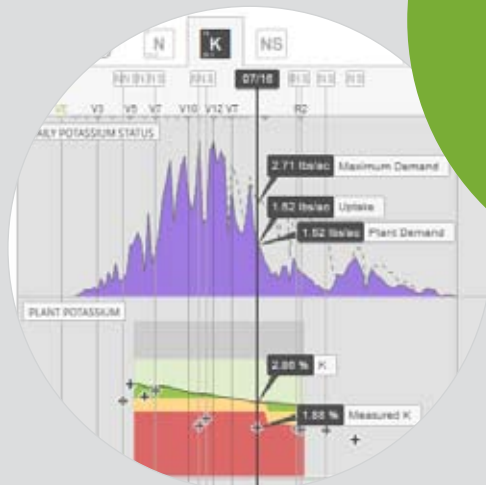
- Daily tasks
- Location on parcels
- Agro-ecological parameters
- Technology planning
- Field history
- Crop rotation

## Difference

Potential yield without fertilizing	9.098 kg/ha	+1.325 kg/ha
Potential yield by adding N fertilizer	10.423 kg/ha	
Potential revenue without fertilizing	1.273,69 € / ha	+185,53 € / ha
Potential revenue by adding N fertilizer	1.459,22 € / ha	
Cost of fertilization	224,65 € / ha	
<b>Potential profit with fertilization</b>	<b>-39,14 € / ha</b>	



- What's the impact on profit?
- Fertilization planning
- Control yield and expenses
- Weather monitoring



---

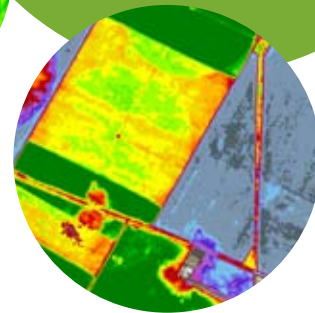
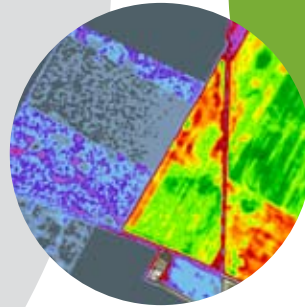
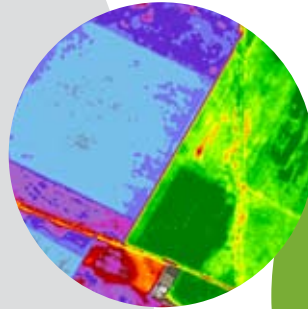
## REMOTE SENSING

---

- Satellite-assisted monitoring of crops
- Significant added value in the form of a "global view" of farmers' parcels with recommendation and warning mechanisms
- Useful metrics for daily decision making procedures and is in accordance with the IACS regulatives

### Transformation and indexes:

- True
- False
- NDVI
- RE-NDVI (red-edge based NDVI)
- Soil adjusted VI (SAVI)
- EVI
- EVI2
- CRI 1 in 2
- PSRI
- PSRI - NIR
- ARI 1
- ARI 2
- MSAVI2



Built-in vegetation index calculation provides information about water retention, dryness, fertilization needs, depressions in fields, etc.

---

## SATFEEDZ: Sentinel II for your farm

---

- WMS & WFS tiles via webservice into your GIS
- 10x10m resolution, frequency <5 days
- 5 yr image archive of your parcels, all 12 bands
- **9€ / 100 ha / year, Bulk discounts apply**
- OEM & reseller inquiries welcome



MAY



OCTOBER



JULY

Integration of **12 spectral satellite images** into PANTHEON Farming allows to view time lapses.



# PANTHEON Farming features

## SETTINGS

### Agricultural holding

- Data about agricultural holding
- Data import from the register
- Every holding acts automatically as warehouse
- List of holdings, organization by animal types
- Organization of animals into groups/flocks
- List of parcels
- Organization of parcels into subdivisions
- Parcel location
- Details about parcels for agri-environmental records
- List of household members
- FADN statuses for FADN reporting
- Every household member is automatically transferred into personal files
- List of consultants, with details for FADN reporting
- List of veterinarians, with animal treatment details

## ANIMALS

### Records about individual animals

- All data about an animal in one place
- Animals family trees
- FADN types automatically created and updated
- Animals production statuses

### Animal register

- List of animals in a holding
- List of animal movements for each animal
- Animal register printout

### Milking records

- Milking history
- Data input on daily, weekly and monthly basis
- Milk analyses for each milking
- Select animals to be milked in each milking
- Time tracking for individual workers
- Milking records for each holding

### Veterinary activities journal

- Overview of all treatments
- Data filtering
- Each treatment is assigned to a veterinarian
- Recording of reproduction and veterinary treatment costs for individual animal

### Feeding

- Feeding plans preparation for different categories with detailed calculation of nutrients

- Feeding plan tuning for milk quantity or daily growth in comparison with energy intake and consumption ability
- Import of feeds from web service with defined nutritional values
- Calculation of feeding plan costs
- Recording of feeding with calculation of costs per animal
- History of feeding on animal record

### Stable tasks

- Time and materials tracking for various tasks
- Time worked is automatically transferred into HR
- Materials spent or produced are automatically recorded
- Select fixed assets involved in tasks

## CROPS

### Production cycles

- Enter data for all produce
- Each crop with its own cycle
- Every cycle creates a work order
- Select subdivisions for each cycle
- Planning of start and end dates
- Planning of produced quantity
- Work order statuses updated automatically
- Work order statuses can be changed manually

### Daily tasks

- Individual tasks in crop farming for individual cycles
- Tasks recorded by groups according to agri-environmental records
- Enter additional data for agri-environmental records
- Assign workers to cycles
- Assign materials to cycles
- Select fixed assets involved in tasks
- Cycles are closed automatically when produced quantity reached planned quantity
- Task history
- Data filtering

### Fertilization plans

- Prepare fertilization plans with detailed calculation of fertilization elements N, P, K (adding with fertilizers and consuming with crops)
- Automatically calculate shortage or surplus of nutrients
- Take into account soil analysis in calculation
- Adjustable time span of fertilization plan

## Orchards

- Orchard overview with detailed information by fruit type
- Set norm for harvest workers
- Agroclimatology (integration with automatic weather stations)
- Pest scouting (integration with automatic traps)
- Visual pest scouting
- Phenology monitoring for all fruit productions
- Pedology
- Set pruning norm
- Calculating efficiency of working hours for harvest and pruning
- Detailed orchard inventory (by rows, tree dimensions, rootstock, etc.)
- Multiple orchard activities
- Weather forecast
- Weather data history
- Analysis of technological production data

## Vineyards

- Detailed information about varieties and rootstocks

## FINANCIALS

### Cost monitoring

- Tracking costs for individual animal through cost centers
- Tracking costs for individual production cycle of land parcel through cost centers
- Distribution of general costs (water, electricity, etc.) to individual animals, production cycles of land parcels through distribution keys

### Goods

- Receiving and issuing invoices
- Tracking of material in stock
- Reports for VAT
- For each movement, disposal, etc. the program creates a material document

### Accounting

- Accounting based on standardized chart of accounts
- Automated creation of invoice for reproduction and health treatment by veterinarian
- Register of Fixed Assets

### FADN reporting

- Monthly reporting
- Automatic data import
- Possible data adding and editing
- Report printing or exporting enabled

## WINEMAKING

### Cellar overview

- Overview of wine in stock per barrel
- Graphical and tabular cellar overview
- Sell wine directly from the barrel
- Optional graphical formation of barrels in the cellar
- Wine temperature recording and overview

### Cellaring tasks

- Record winemaking tasks from grape pressing to wine bottling with traceability of wine through the process
- Calculate costs of individual tasks and used materials for cost price calculation of wine
- Trace used materials for cellaring tasks
- Record wine blending and racking
- Calculate sugar and alcohol content with different sugar scales (Baume, Brix, Oechsle)
- Record wine analysis to determine wine quality

## ZEUS

### Key indicators

- Overview of herd structure by FADN for cattle, sheep, goats and pigs
- Overview of monthly milk quantity for whole farm
- Overview of milk quantity according to milk analyses
- Overview of monthly somatic cell count for whole farm
- Overview of offspring numbers for pigs

### Reproduction, cattle

- Insemination index counter
- Non-return rate counter
- Graphical overview of veterinarian and reproduction costs
- Tabular daily overview of animals before first insemination
- Tabular daily overview of animal stages in reproduction cycle

### Reproduction, pigs

- Graphical overview of reproduction events
- Total number of reproduction events per animals
- Overview of daily events per animal

### LPIS map

- Location of LPIS on map
- Indication of material and time usage for production cycle in selected period

PANTHEON Farming is a member of the PANTHEON family of business software.



**datalab** agro

DataLab Agro AG  
Bahnhofstrasse 3  
CH-8808 Pfäffikon

F +41 55 415 5401  
T +41 55 415 5476  
fa@datalab.ch  
www.datalab.ch