



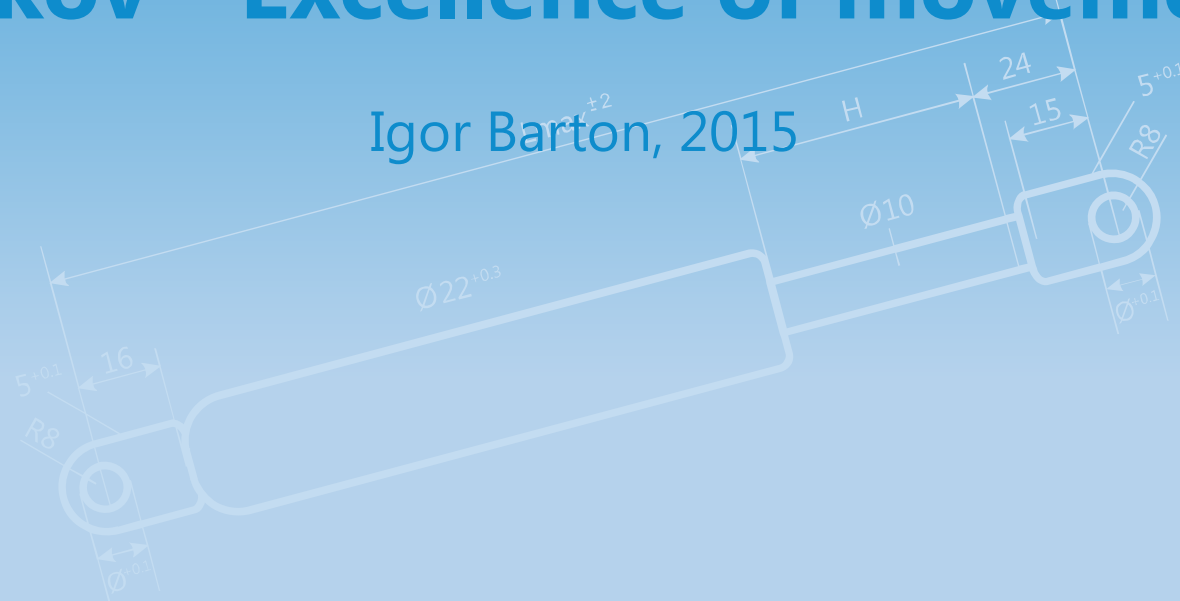
plinske vzmeti *gas springs*

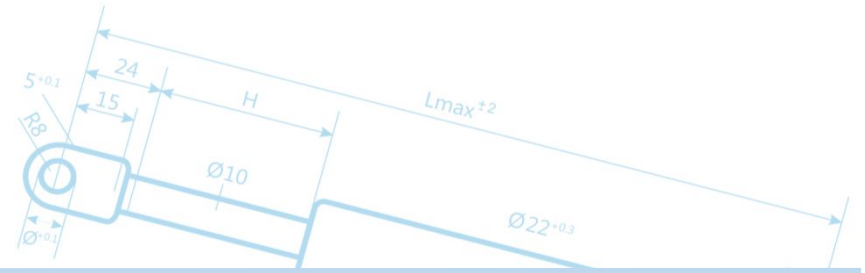
*Sila, ki premika*

*Force that moves*

## Obkov - Excellence of movement

Igor Barton, 2015



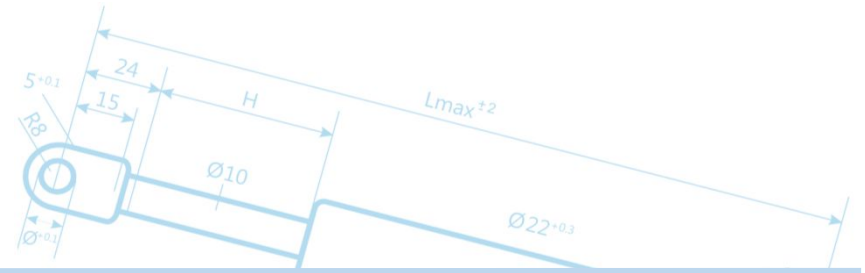


## Vision

- To become the recognizable company in EU region and wider for delivering GAS SPRINGS; high value products, services and knowledge to our customers.

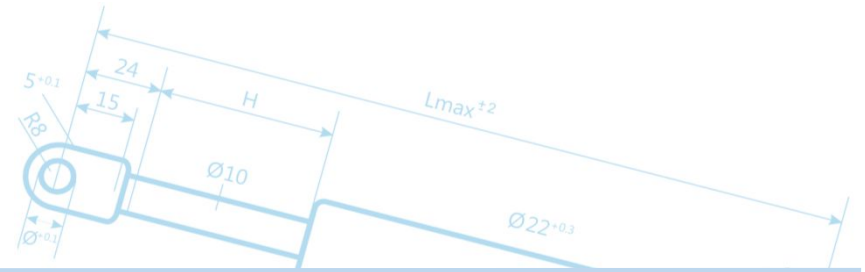
## Mision

- To design, create and produce best-of-class products and solutions for a smooth movement for our customers.



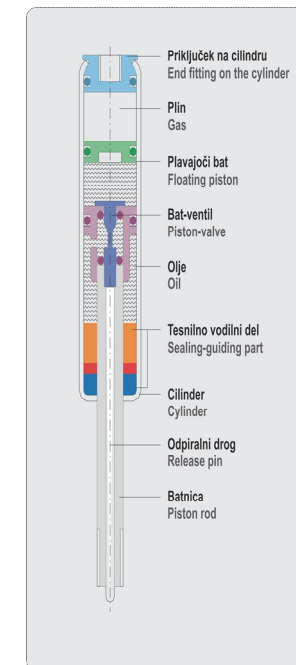
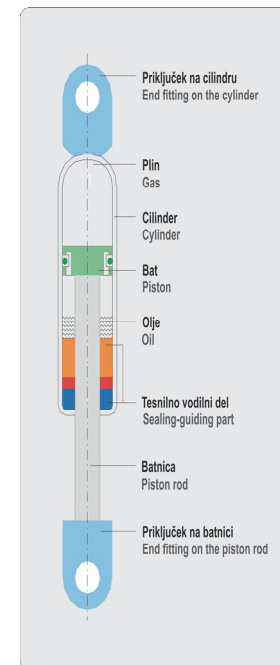
## Facts

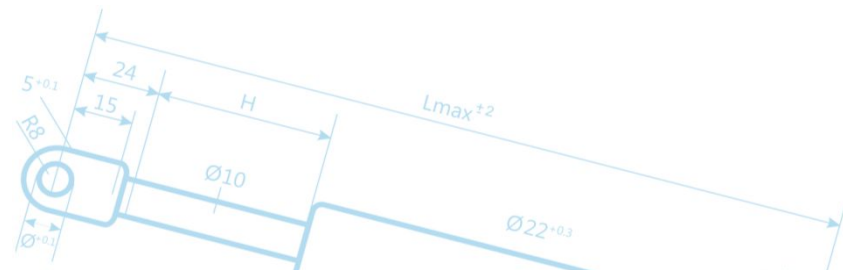
- Producing gas spring since 1991
- In house R&D
- Quality certificate ISO 9001:2008
- Production capacity over 100.000 gas springs per year
- More than 60% of production exported
- Low percentage of complaints (<1%)
- 70% of production is automated
- Manufacturer with high price / performance ratio
- Wide GS production portfolio: standard GS, adjustable GS, GS with dynamic damping connections brackets,....
- Other projects - ROPS, special seats, pallet stackers, shot bolts
- 12 employees
- Total production area 1300 m<sup>2</sup>
- Made in SLOVENIA (EU) – 100%



## Gas spring basic

A gas spring is a closed system with innerly defined pressure of nitrogen. It consists of a piston rod, a cylinder, a sealing-guiding unit and end fittings.





## Gas spring applications

Obkov' gas springs can be found in a wide range of products and applications.

Automotive



Bus/Truck



Train



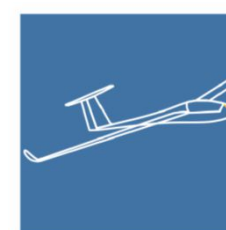
Special vehicles



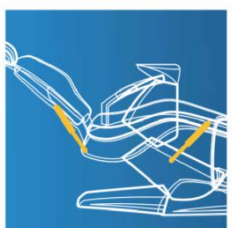
Agriculture



Aviation



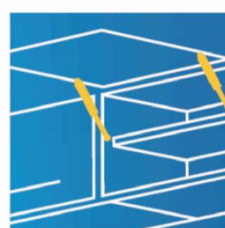
Medical



Engineering



Furniture



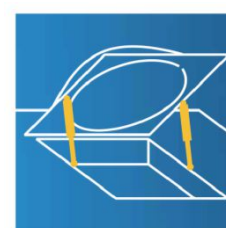
Joinery

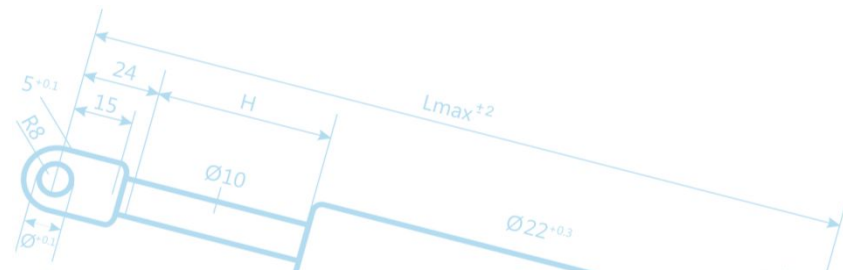


Construction machinery



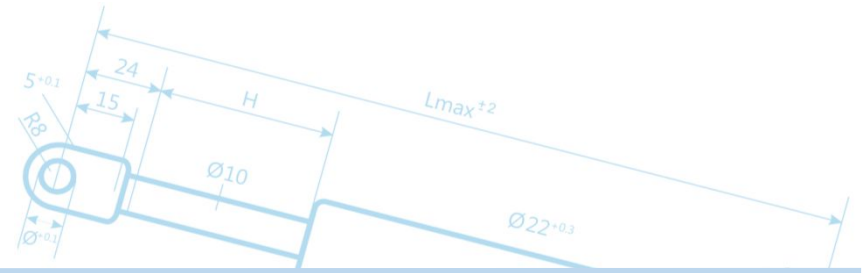
Other





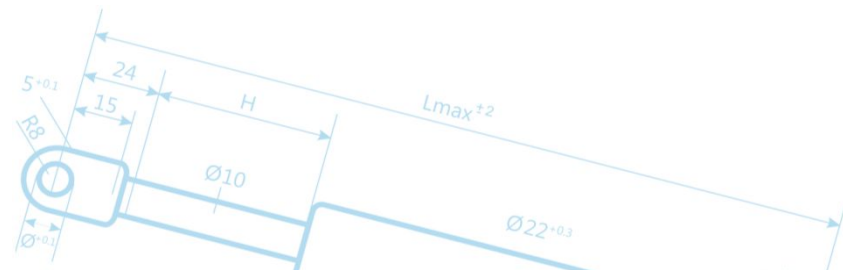
## References



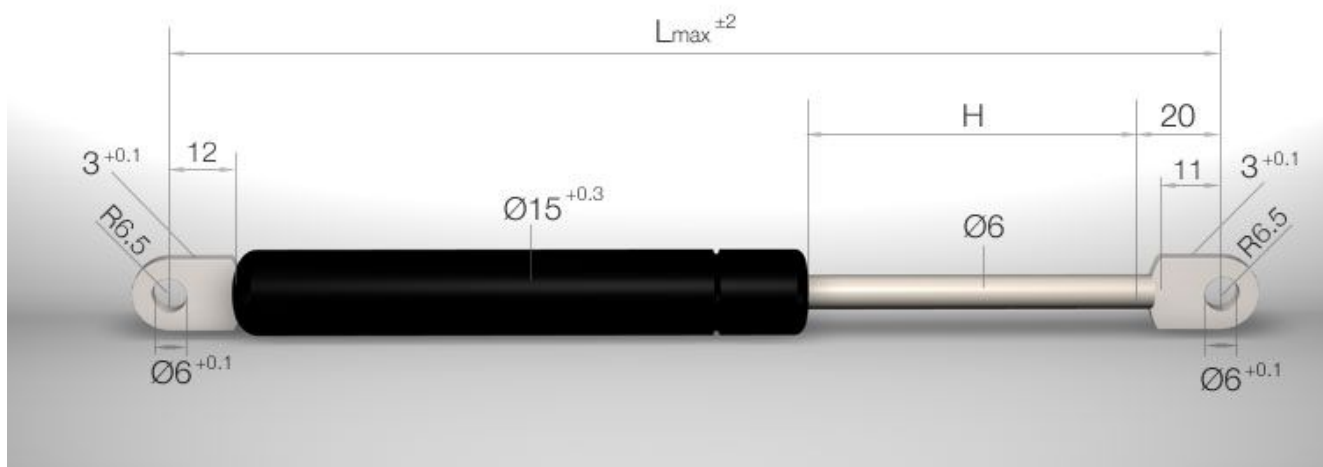


## Portfolio

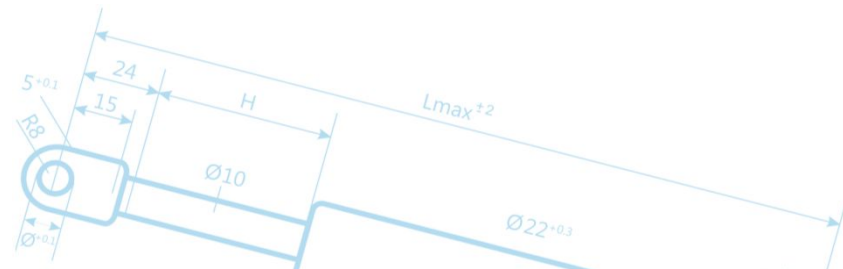
- **Gas Springs with welded hinge eyes**
- **Gas Springs with thread**
- **Locking Gas Springs**
- **Actuation systems for locking gas springs**
- **Gas Springs with dynamic extension damping**
- **End fittings for gas springs**
- **Attachment elements**



## Gas Springs with welded hinge eyes



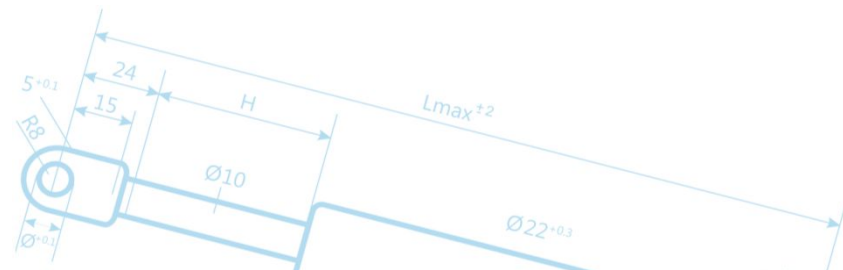




## Gas Springs with thread

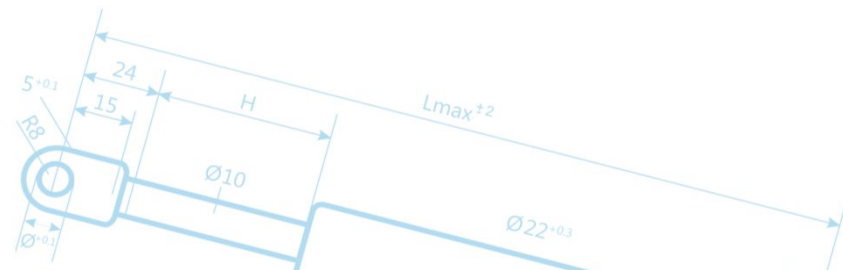
Navoj - Thread  
P2 (M6x8)



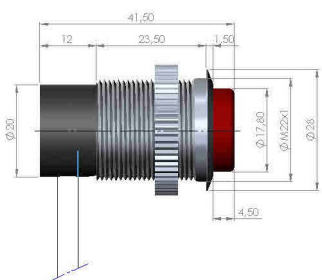


## Locking Gas Springs



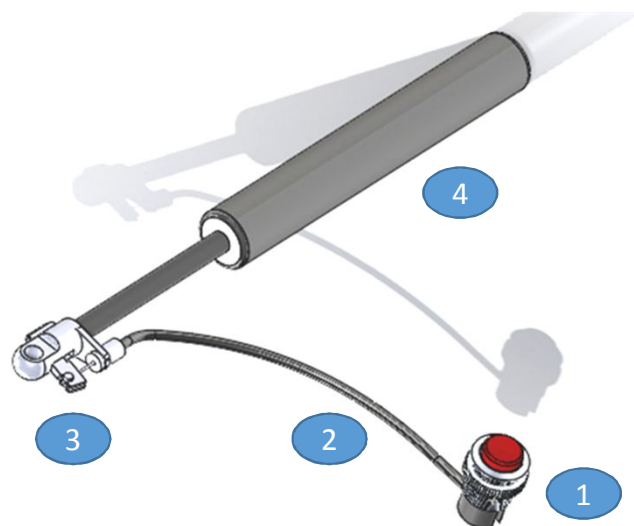


## Actuation Systems for Locking Gas Springs

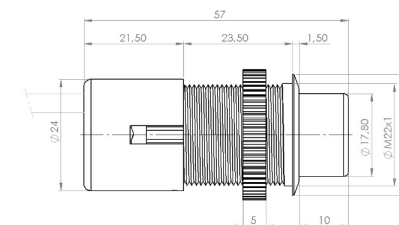


PG AI 28 - 90° - lateral bowden exit

- Transmission ratio 1:2
- Stroke 5 mm
- Bowden 4,2 , length 500, 750, 1000, 1250

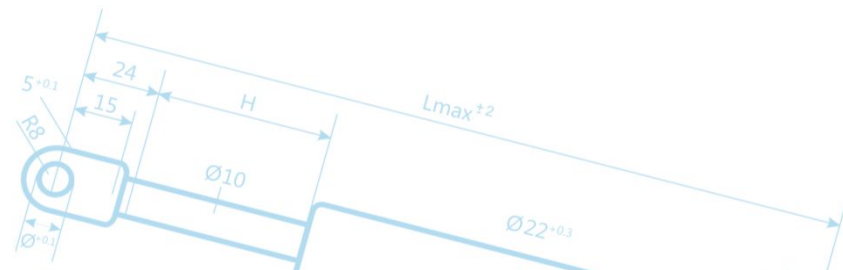


- 1 Release push-button
- 2 Bowden-wire 4,2
- 3 Release unit (head)
- 4 Locking gas spring NPV, NHC

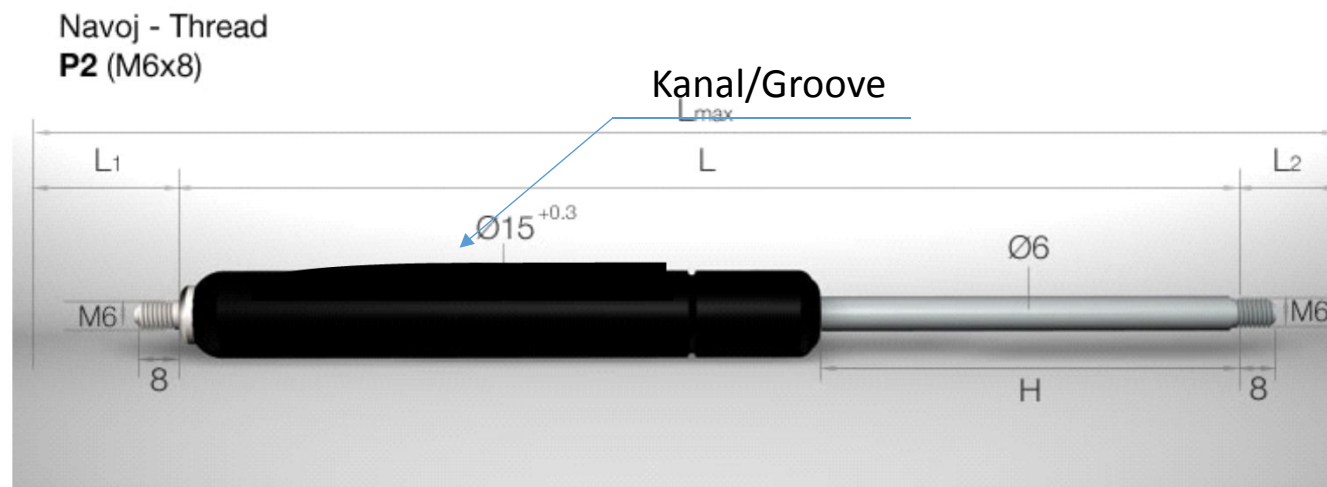
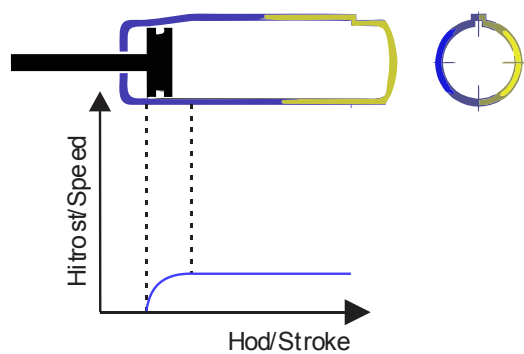


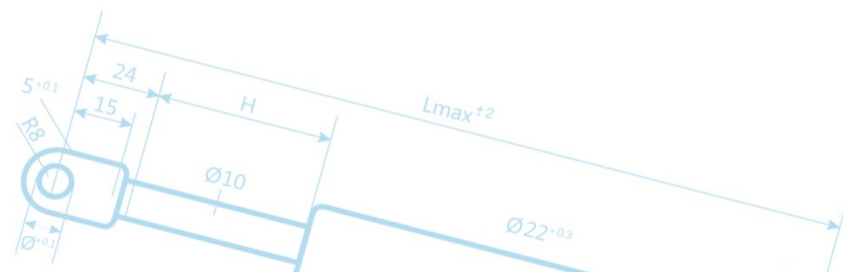
PG AI 28 - 180° - axial bowden exit

- Transmission ratio 1:1
- Stroke 10 mm
- Bowden 4,2 , length 500, 750, 1000, 1250



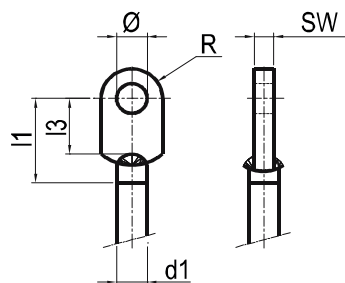
## Gas Springs with dynamic extension damping



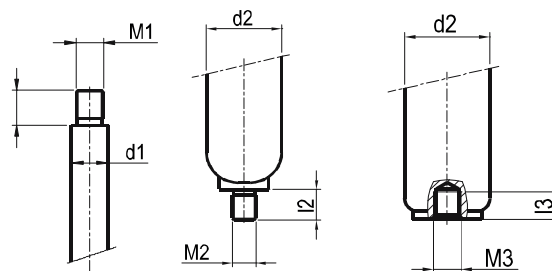


## End fittings for gas springs

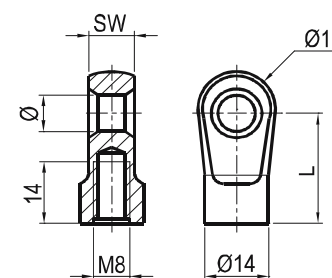
Welded hinge eyes on the piston rod



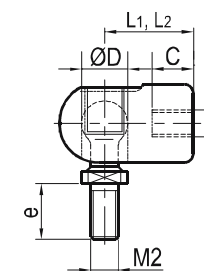
Thread on the piston rod / Thread on the cylinder

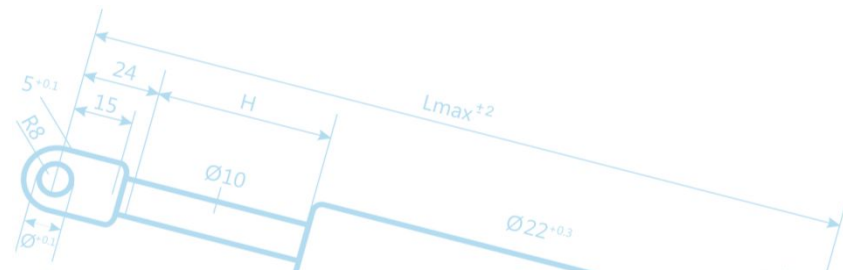


Hinge eyes



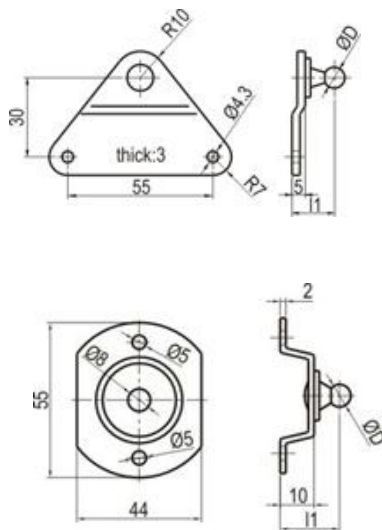
Ball seat



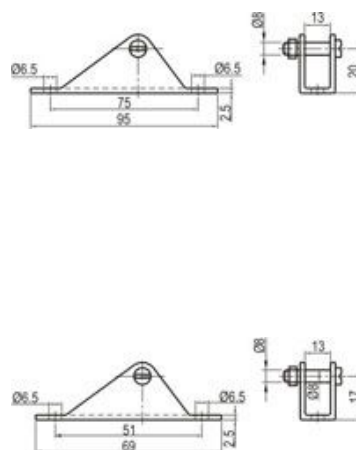


## Attachment elements

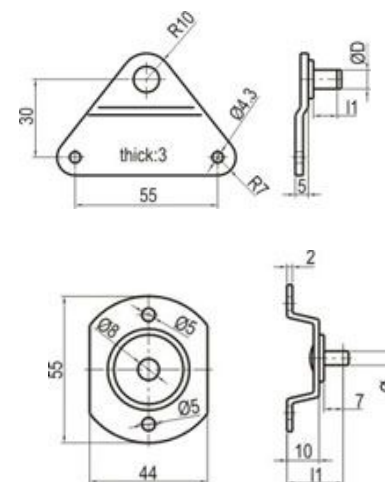
Attachment for GS  
with ball seat

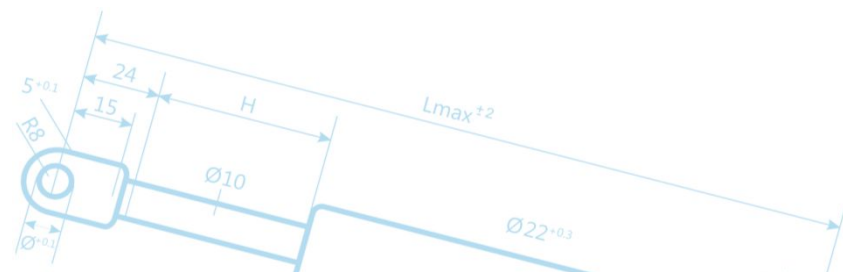


Attachment for GS  
with hinge eyes



Attachment for GS  
with hinge eyes





**Obkov d.o.o.**  
**Vodovnikova ulica 35, SI-2310 Slovenska Bistrica**  
**T: +386 (0)2 840 12 40, F: +386 (0)2 840 12 45**  
**E: [info@obkov.si](mailto:info@obkov.si), W: [www.obkov.si](http://www.obkov.si)**